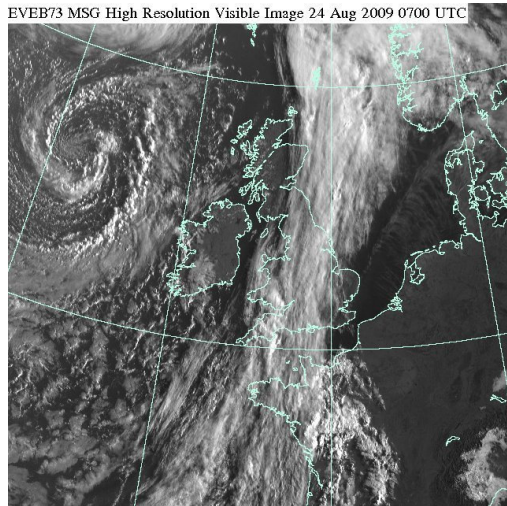
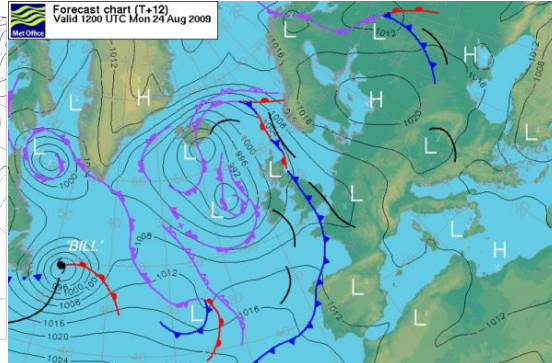
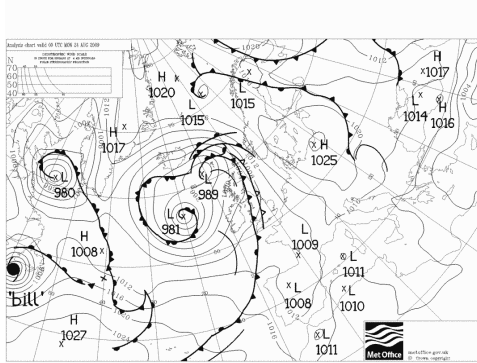
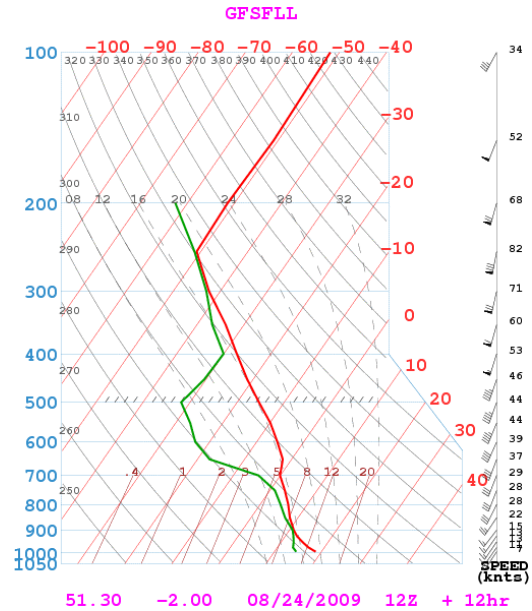


15m NATIONALS ASTON DOWN – WEATHER BRIEFING 24th. August 2009



Vis 24 0800



General Situation.

A low pressure system to the W of UK is bringing a moist SW airflow across England. Cloud associated the cold front through central UK is moving slowly E but is likely to persist into the afternoon. Any soarable clearance isn't likely until after 1500, and the only area for a task would be into N Wales/Cheshire.

OUTLOOK: A more unstable airmass for Tuesday with possible shower activity. Rain and wind on Wednesday. Thursday looking good.

Freezing level. 10,000ft.