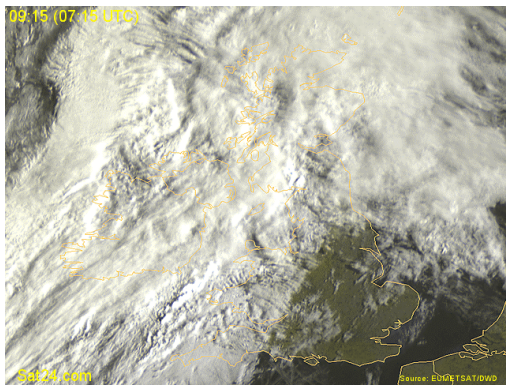
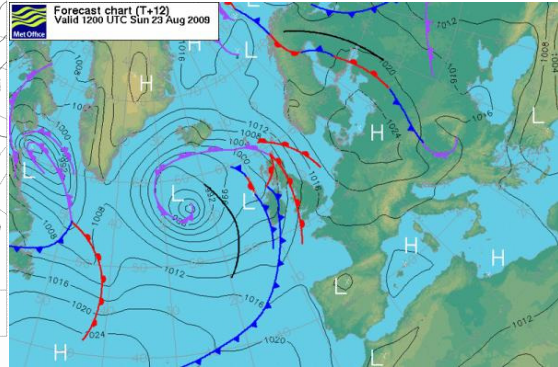
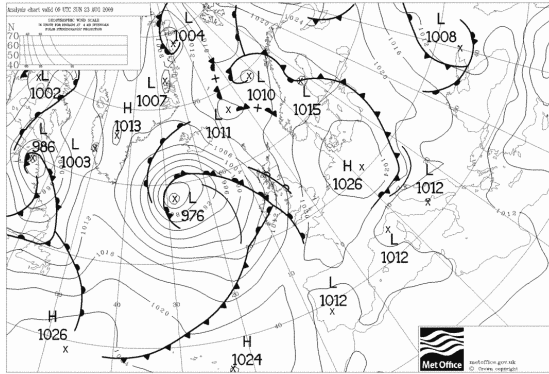


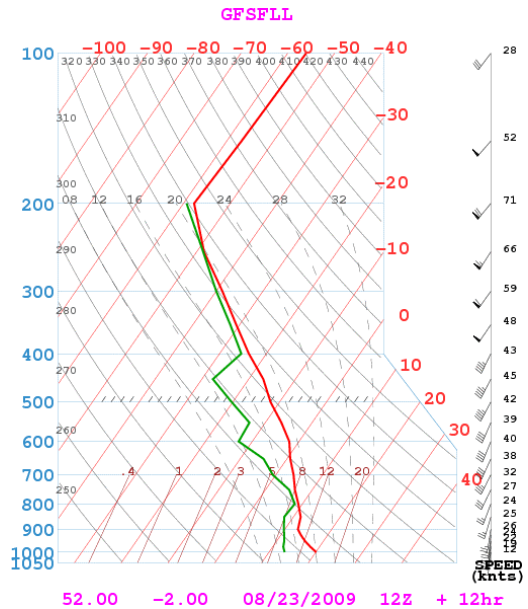
15m NATIONALS

ASTON DOWN – WEATHER BRIEFING

23rd. August 2009



Vis 23 0915



General Situation.

A low pressure system to the NW of Scotland is bringing a strong Southerly airflow across S and E England. Cloud associated with the fronts is likely to remain to the NW of our area under the influence of a ridge of high pressure to the SE. Thermals are likely to be blue, rising to 3500ft in the W and about 5000ft in the E. However, S winds of 25kts at 3000ft will make thermals rough and broken. Wave influence is likely as well.

OUTLOOK: Uncertain at the time of writing.

Freezing level. 12,000ft.