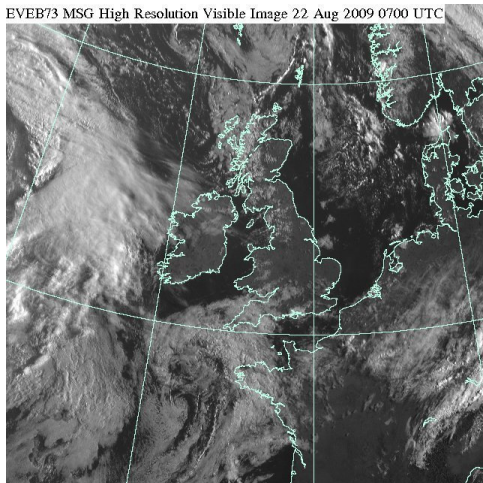
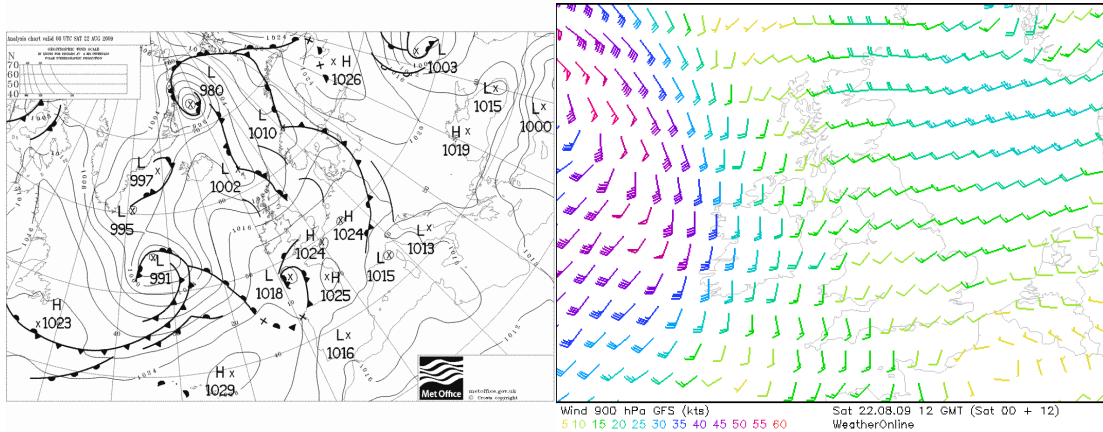


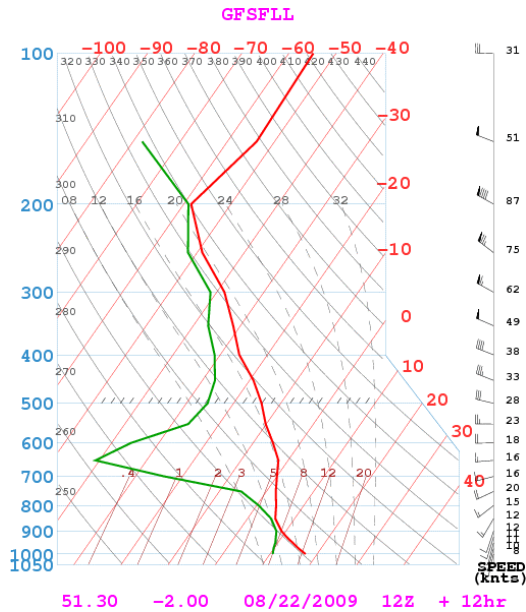
15m NATIONALS

ASTON DOWN – WEATHER BRIEFING

22nd August 2009



Vis 22 0800



General Situation.

A weak low pressure region centred to the SW is feeding layer cloud across S England. It is likely that this will break up during the morning and thermals will start at about mid-day once temperatures reach 18c. Cu will form at about 3,000ft and probably spread out before recycling. During the afternoon cloud base should rise to around 4000ft with less spreadout. Winds will be SSW about 5-10kts at flying levels. Thermal strengths about 3-4kts.

OUTLOOK: Winds backing to S and increasing to 20kts overnight and becoming 25kts at flying levels.

Freezing level. 6,000ft rising to 11,000 overnight.