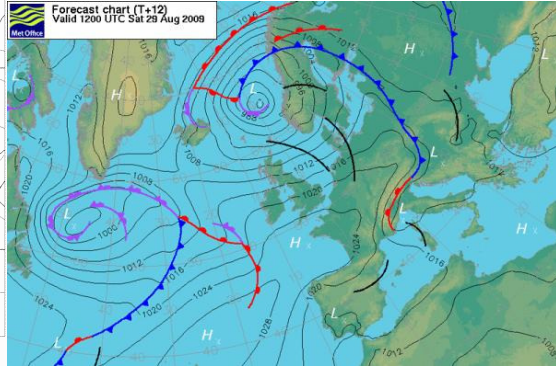
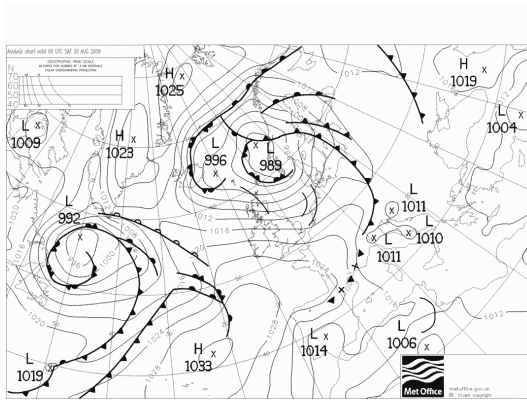
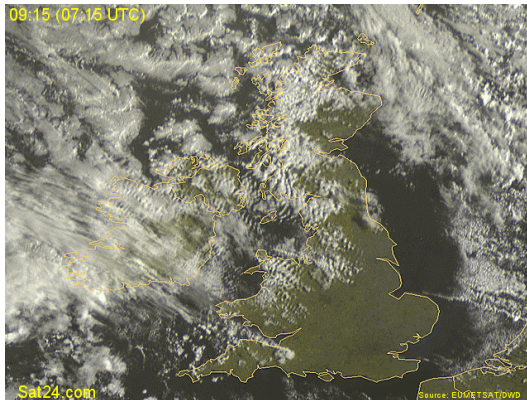


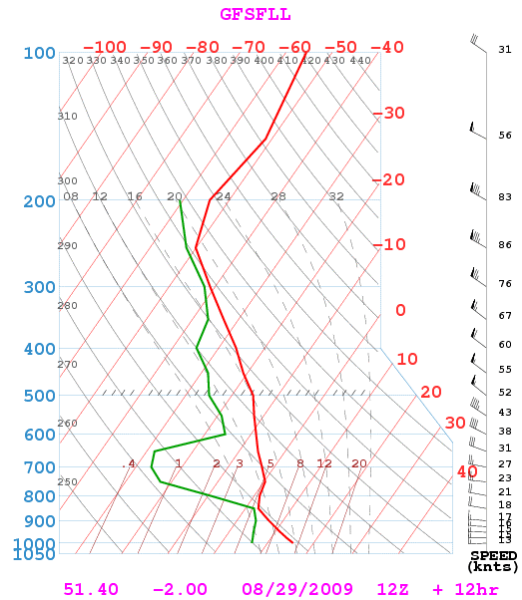
15m NATIONALS ASTON DOWN – WEATHER BRIEFING 29th. August 2009



0000 29



Vis 29 0815



General Situation.

A weak ridge of high pressure is extending over southern England. W winds will persist through the day, mainly 10kts at the surface and 15-18kts at 3000ft. Thermals will be moderate at about 4kts average and cu base will be 3500ft initially rising to 4,500ft or higher during the afternoon, particularly in the E. Some spreadout may occur from time to time. Soaring should start by late morning and continue until about 1830hrs BST.

OUTLOOK: A warm front will bring cloud early and some rain later tomorrow.

Freezing level. 8,000ft.