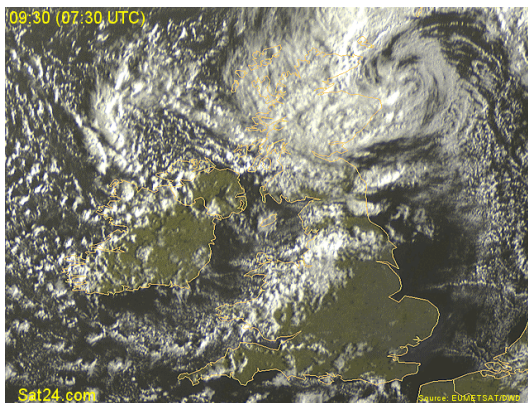
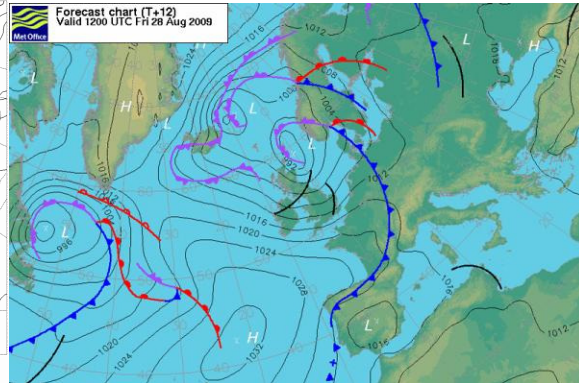
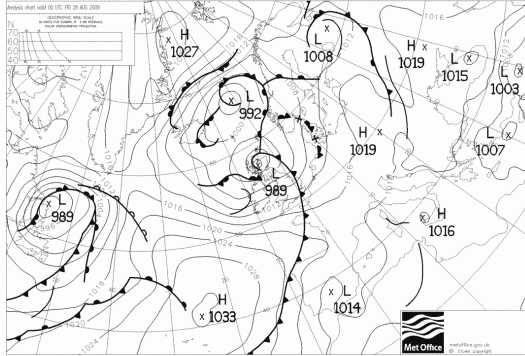
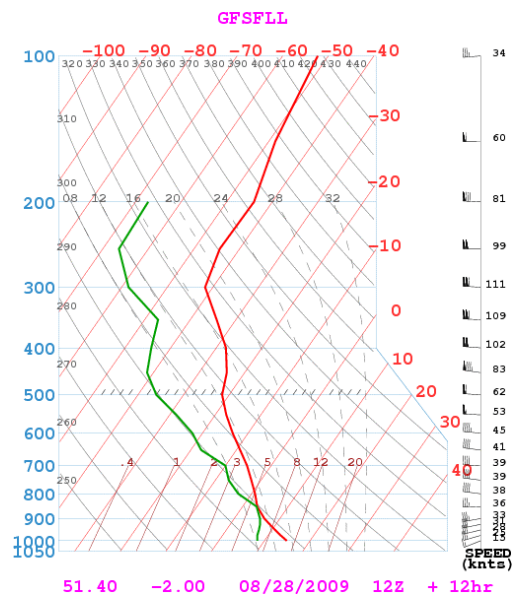


15m NATIONALS ASTON DOWN – WEATHER BRIEFING 28th. August 2009



Vis 28 0830



General Situation.

An unstable W-WNW airflow covers Southern UK. A trough to the NW will cross our area during the morning bringing some rain and gusty winds. Behind the trough the air is quite unstable and cu will develop quickly and build to showers. Cloud base will be about 4,000ft and thermals will be moderate at 4-6kts. The problem will be the wind, which is going to be about 30-35kts at 3000ft. Gusty cross winds on the main runway will require good skills!

OUTLOOK: Much better prospects for a good day on Saturday.

Freezing level. 6,500ft.