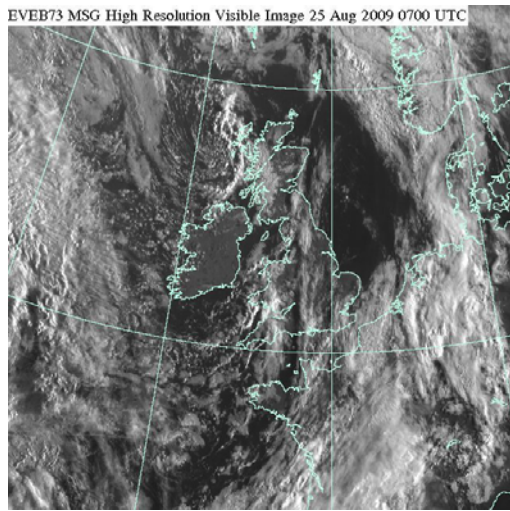
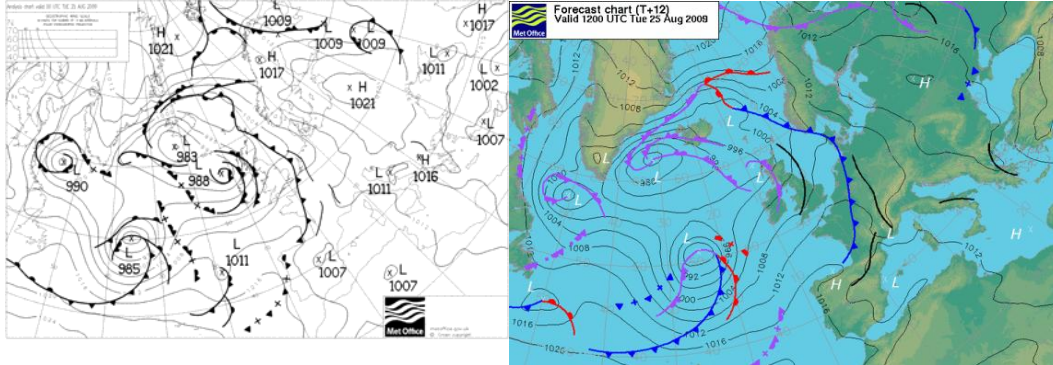
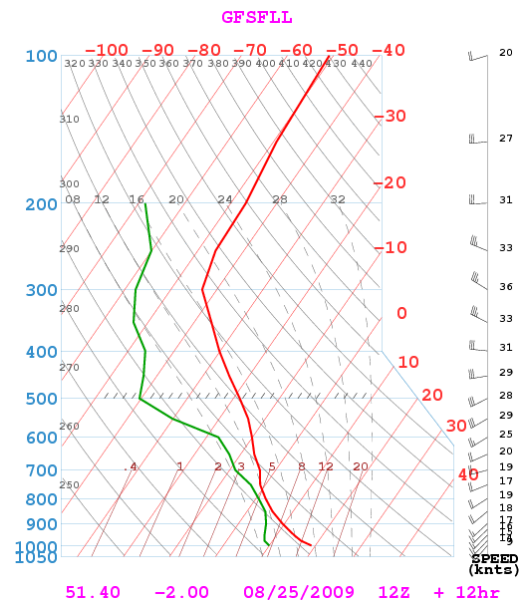


15m NATIONALS ASTON DOWN - WEATHER BRIEFING

25th. August 2009



Vis 25 0800



General Situation.

An unstable SW airstream is covering UK. Convection will start about mid-morning and showers are likely by mid-day. However, there is a possibility of some high cloud moving in from the W delaying the convection for an hour or so. The showers are expected to be scattered and become less frequent later. Cloud base will start around 3000ft and rise to about 4000ft in the E. Cloud tops will reach 14000ft.

OUTLOOK: Rain and strong wind tomorrow.

Freezing level. 7,000ft.